

New breath on former Pärnu industrial areas, beach and pastures.

Karri Tiigisoos
Pärnu city architect

Pärnu is unique by its connection with the water

And definitely, people are connected with water
in many deifferent ways...

For trade



Pernaú

Flußansicht vom Wall.

For defence



PÄRNU MUUSEUM

For vacation



For fun and sports



Beach is almost a spot on entire shoreline
which we have...



... more than 34 km

Historically Pärnu river has been kind of a backyard for the city where main industries have been. Most of these have gone now.

sawmills

cellulose factory

~~ski and furniture factory~~ → furniture and building material factory

~~butchery~~

~~metalworks~~

~~flax factory~~ → bed factory

~~fish industry~~

etc.

But river is still somehow disconnected from everyday life
Turning city towards river been harder as many of us has previously
thought

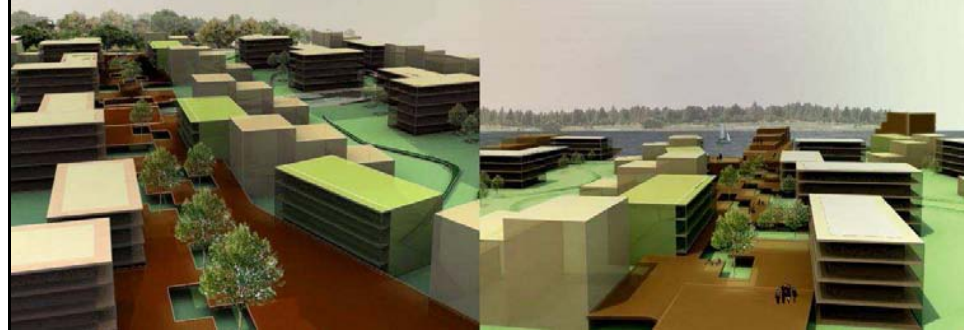




Although in recent years there have been many visions...



Former Maseko fish industry





AS Viisnurk furniture and building material factory



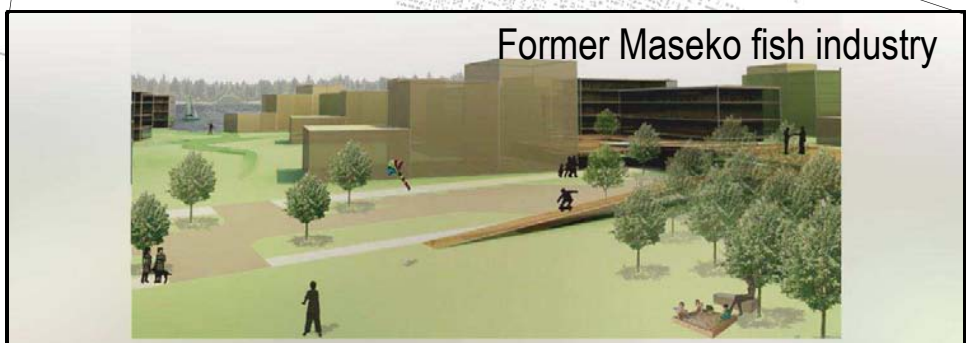
Former Maseko fish industry



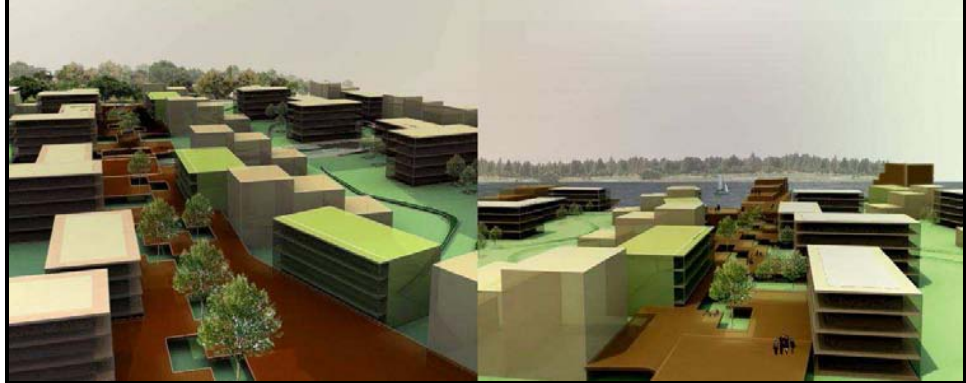
Former butchery

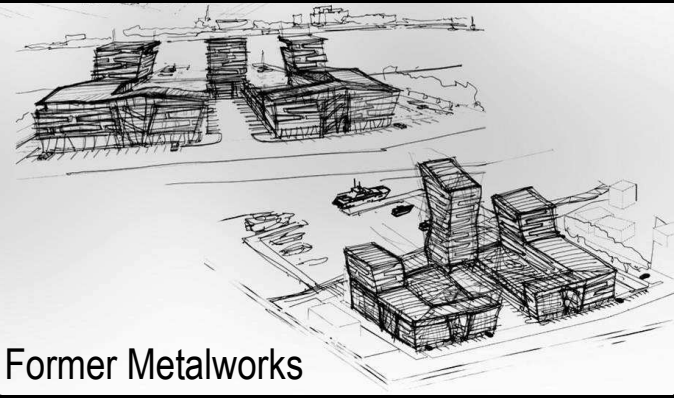


AS Viisnurk furniture and building material factory



Former Maseko fish industry

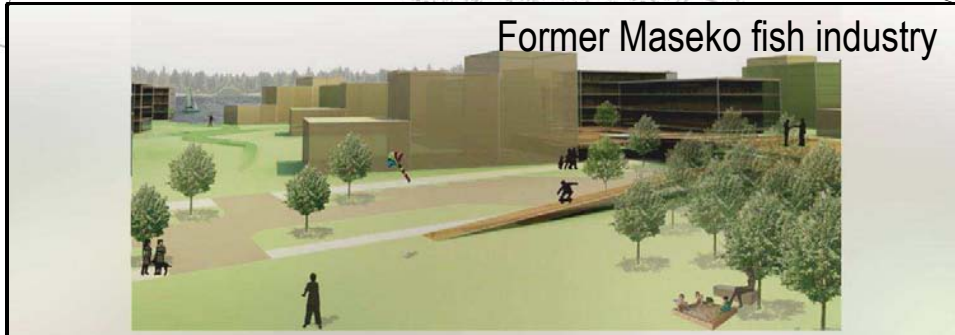




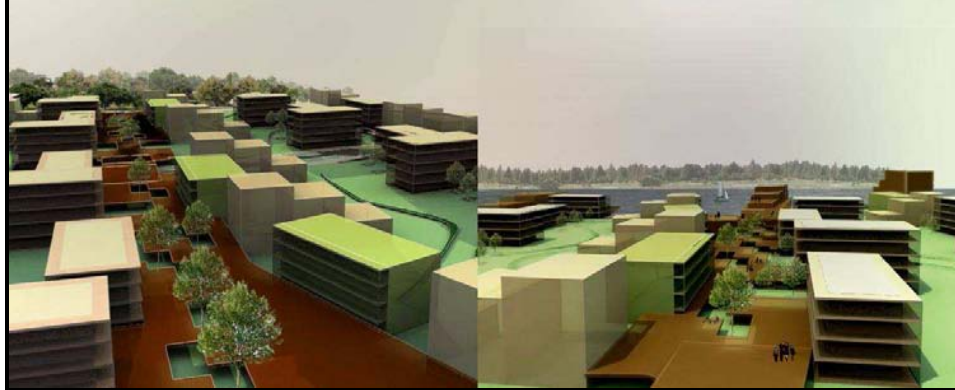
Former Metalworks
Former butchery

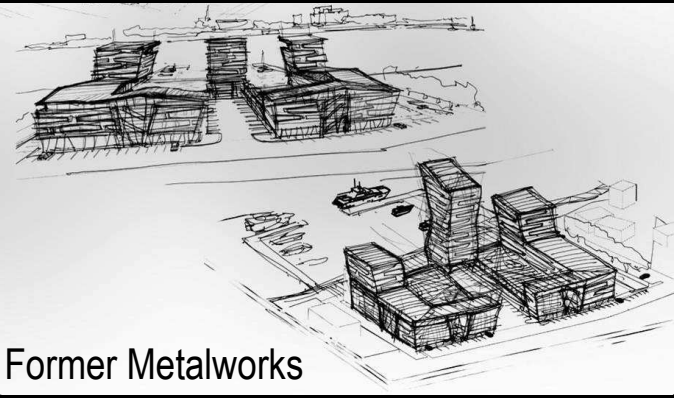


AS Viisnurk furniture and building material factory



Former Maseko fish industry

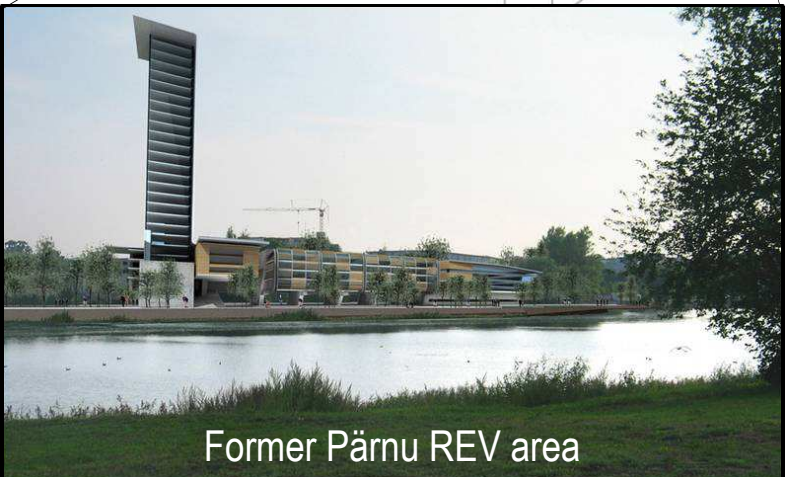




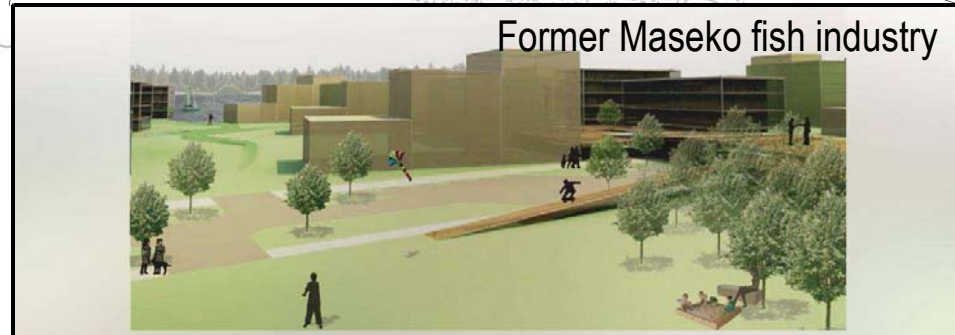
Former Metalworks
Former butchery



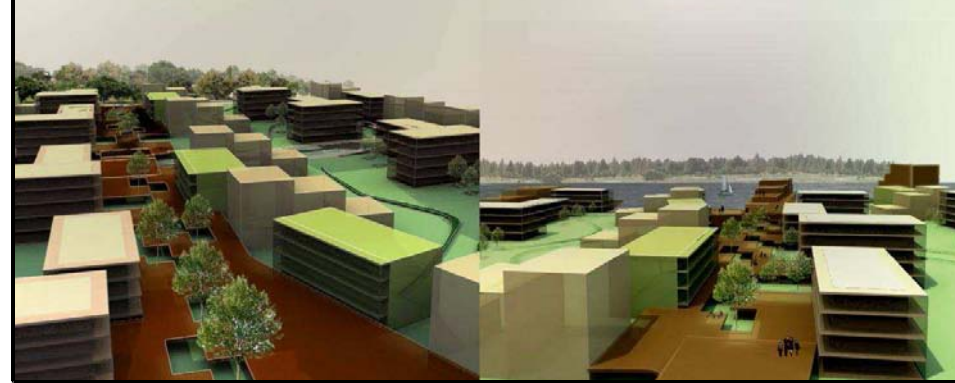
AS Viisnurk furniture and building material factory



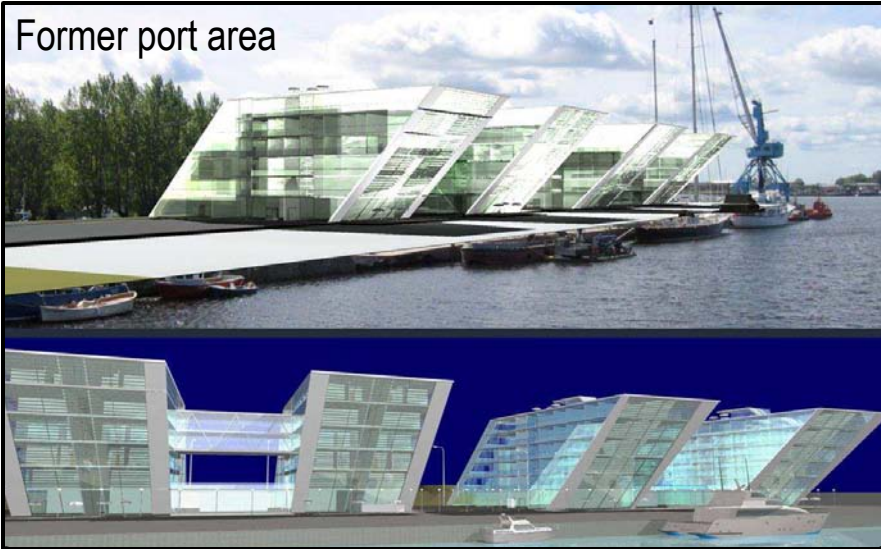
Former Pärnu REV area



Former Maseko fish industry



Former port area



AS Viisnurk furniture and building material factory

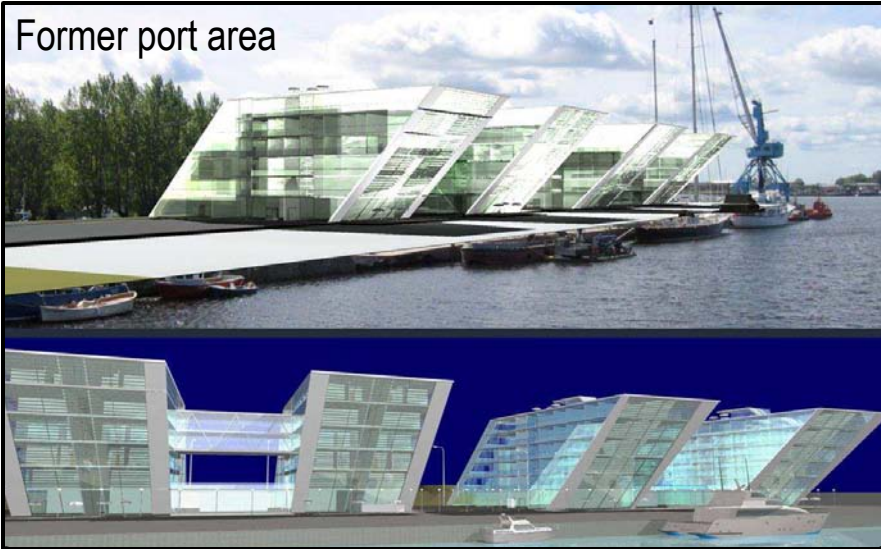


Former Pärnu REV area

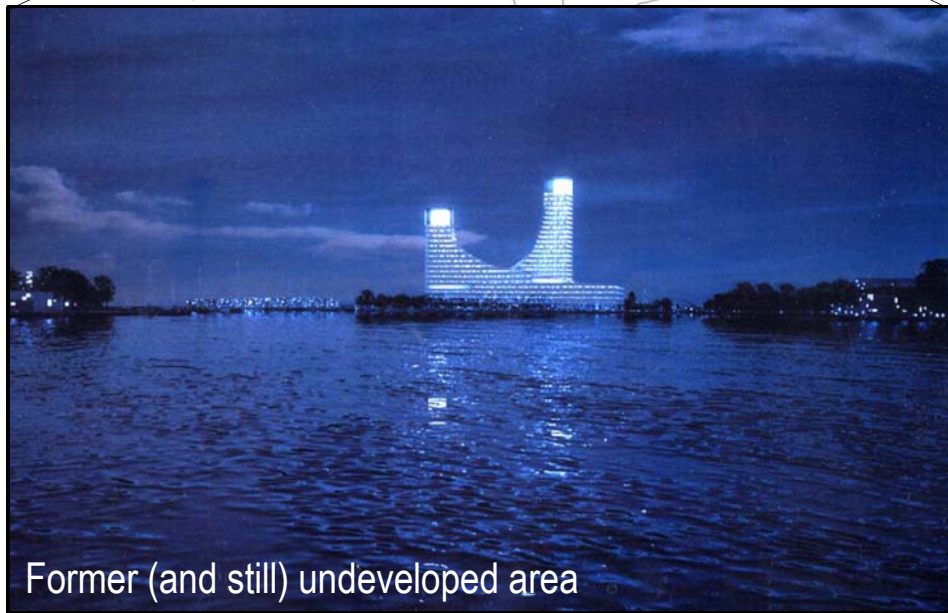


Former Maseko fish industry

Former port area



AS Viisnurk furniture and building material factory

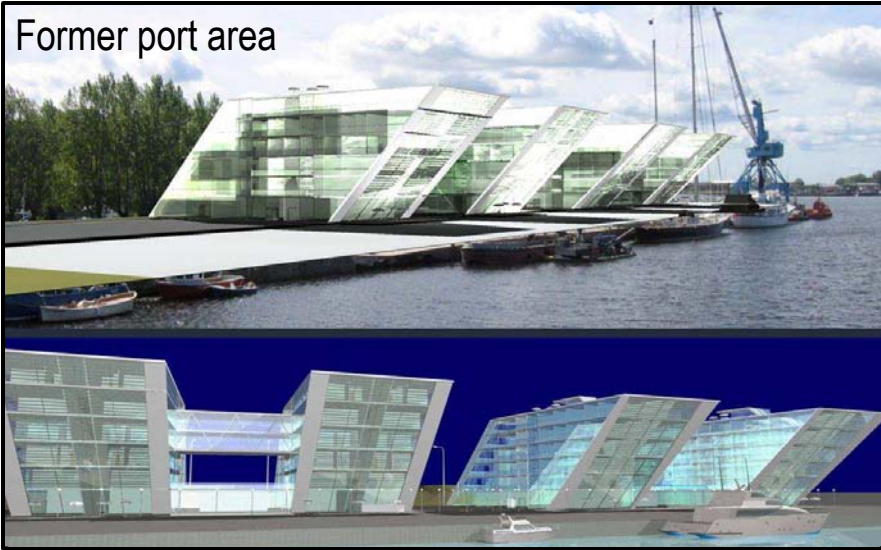


Former (and still) undeveloped area

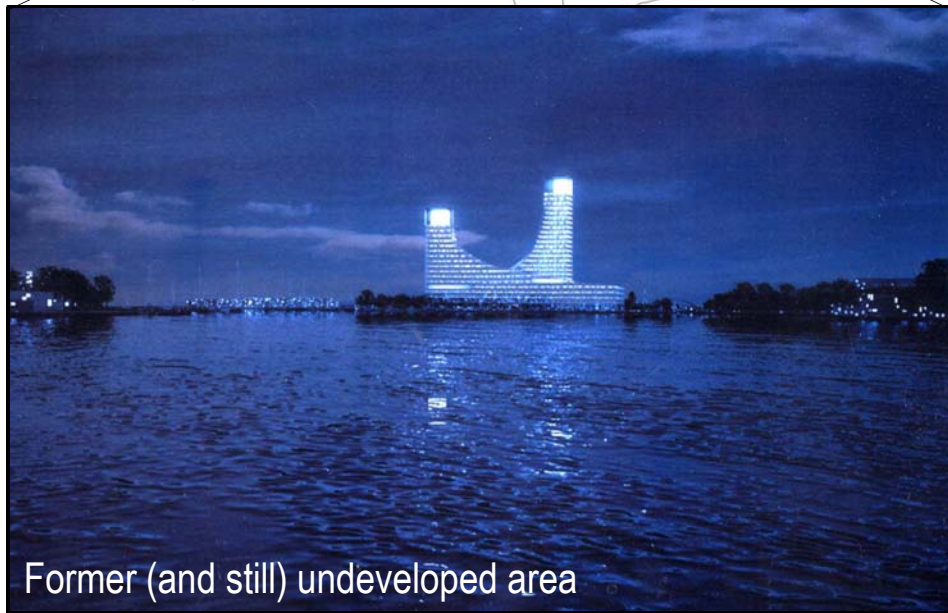
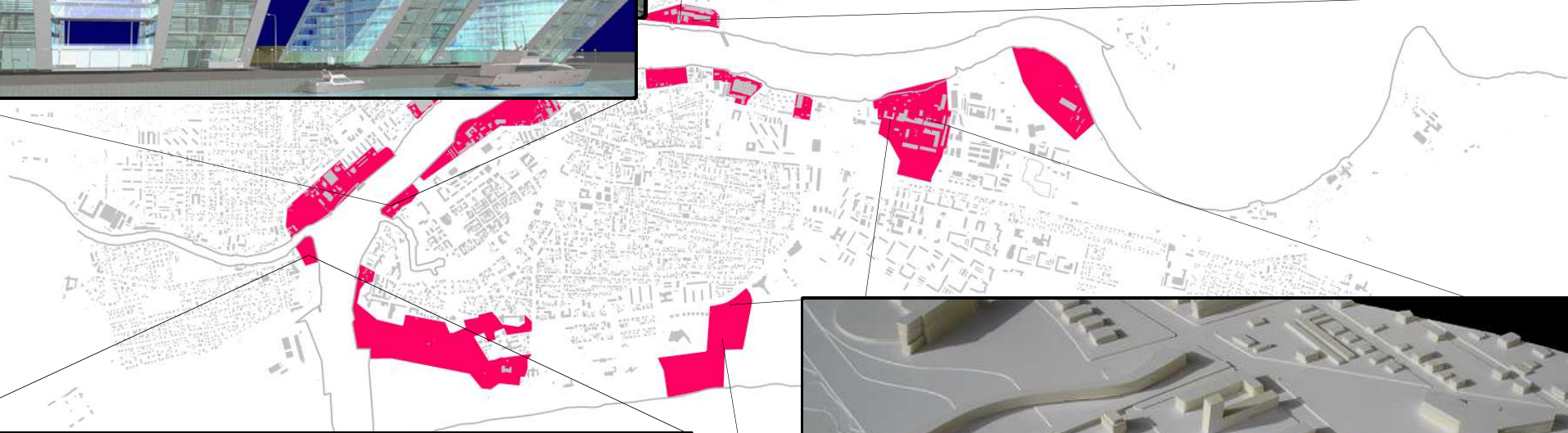


Former Maseko fish industry

Former port area



AS Viisnurk furniture and building material factory



Former (and still) undeveloped area



EUROPAN 7 competition area



NONE of them has been realised

Municipal focus has been on the resort area

Beach promenade



Beach park

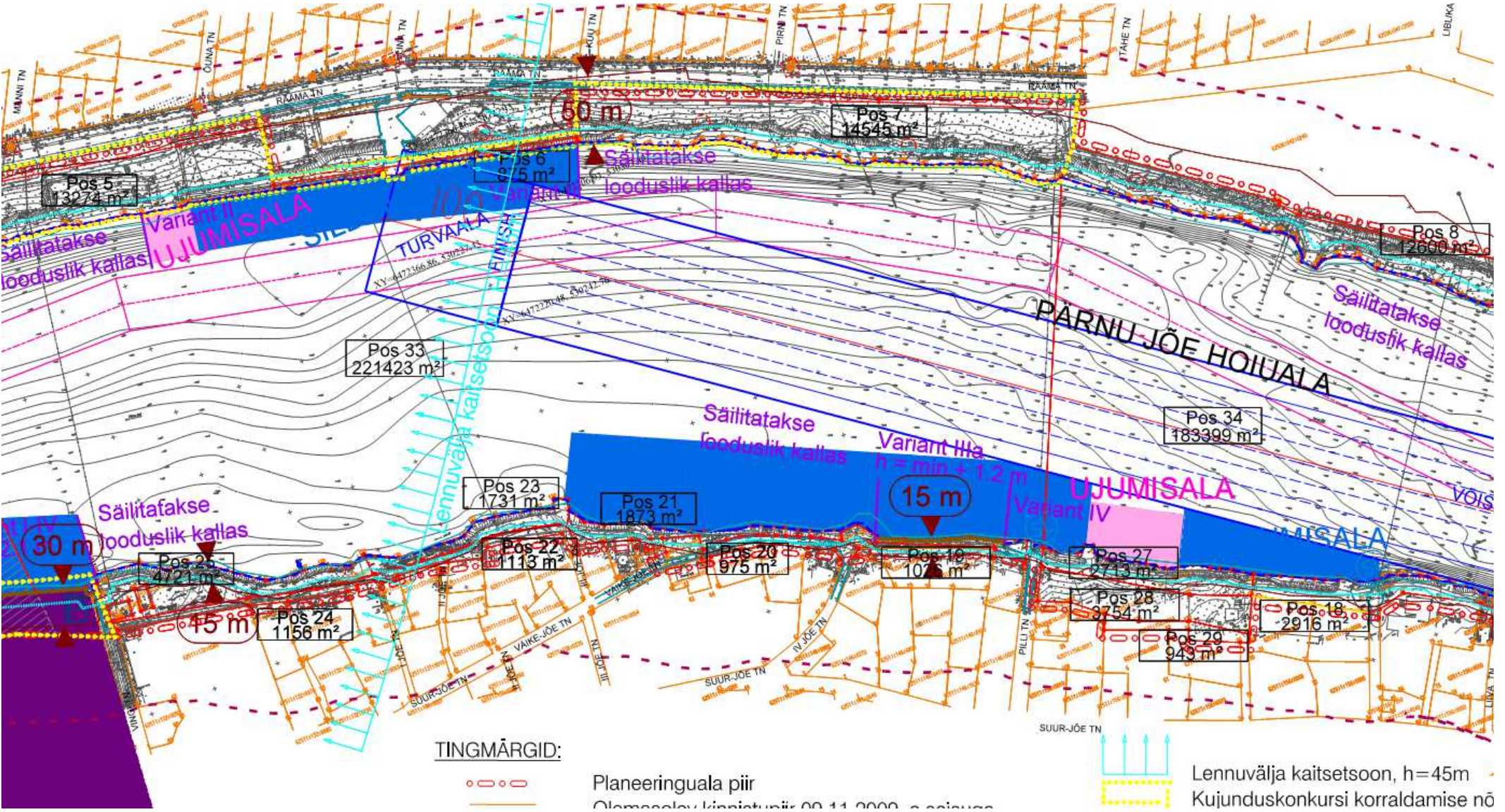


Old moat and winter harbour



And time has come to look again on the river
There has been many years of preliminary work

2010 - detailed plan of Pärnu river aquatorium



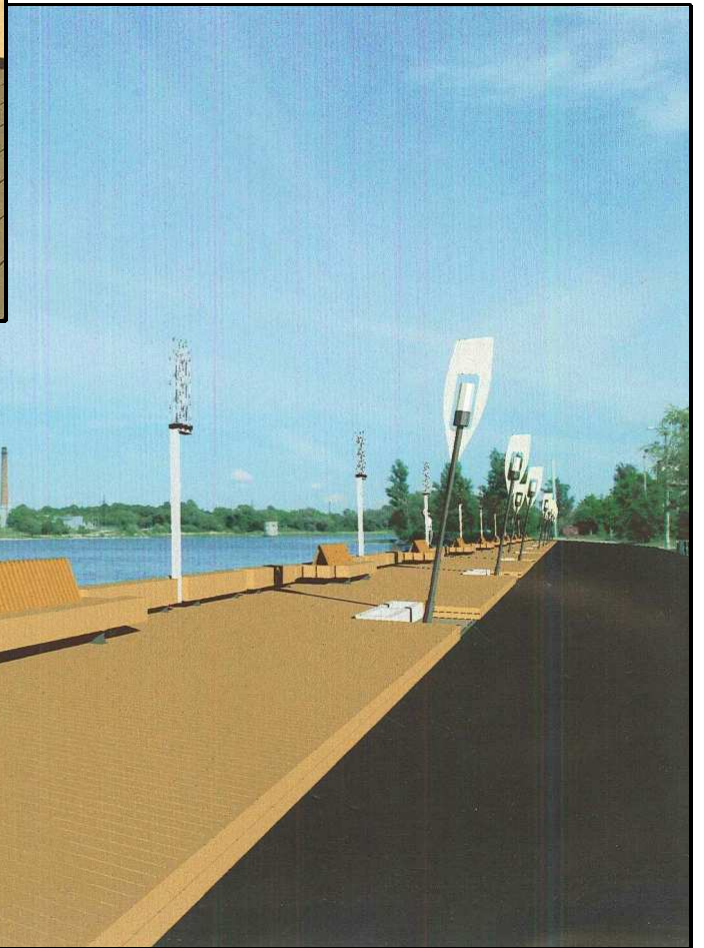
Our goal is to connect riversides and bring people there

2005 – Jaanson's run on the right side of Pärnu river



2014 – complete Jaanson's run on the both sides of the Pärnu river

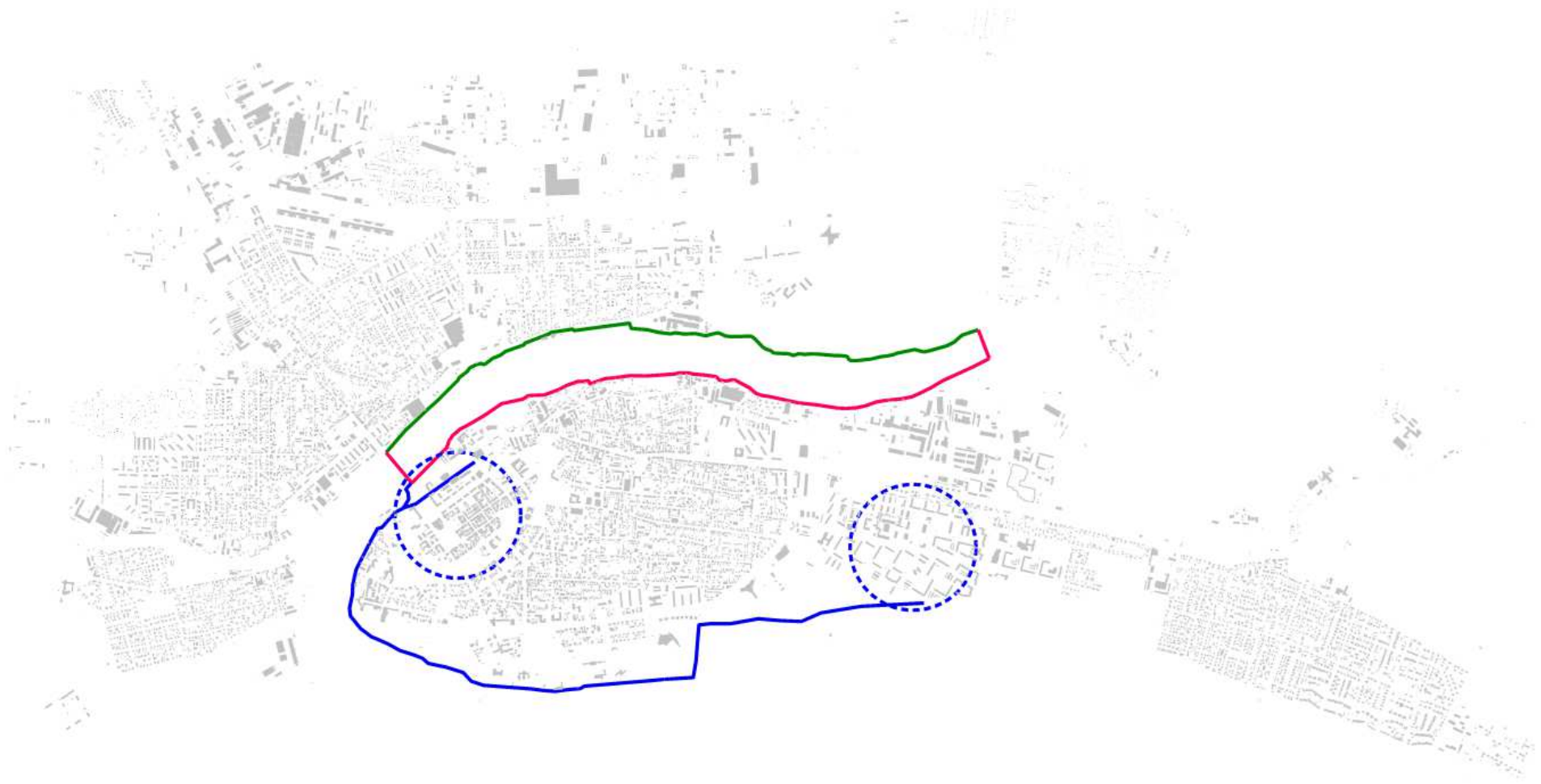




In years to come we need to emphasize connection between:

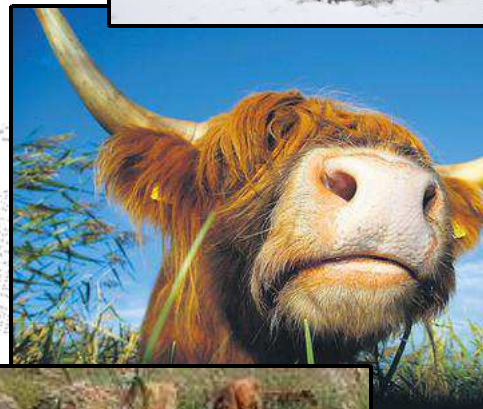
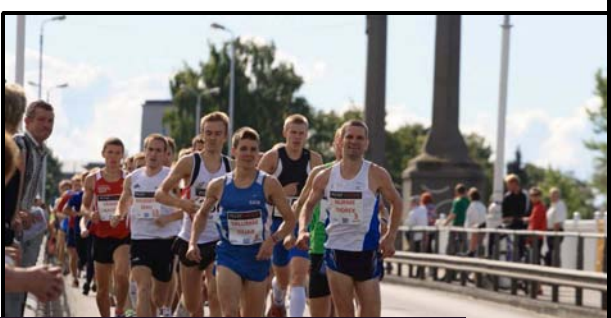
- river and the sea
- river and center
- center and sea
- nature and city
- man and nature
- human and human

...











THANK YOU